


The graphic features a dark blue background with a lighter blue geometric pattern of intersecting lines. The text is white and slanted to follow the lines of the pattern.

Missouri Department of Health and Senior Services

Recall Coordination

The logo features a dark blue background with a lighter blue geometric design consisting of several intersecting lines that create a sense of movement and depth. The text is white and positioned on the left side of the image.

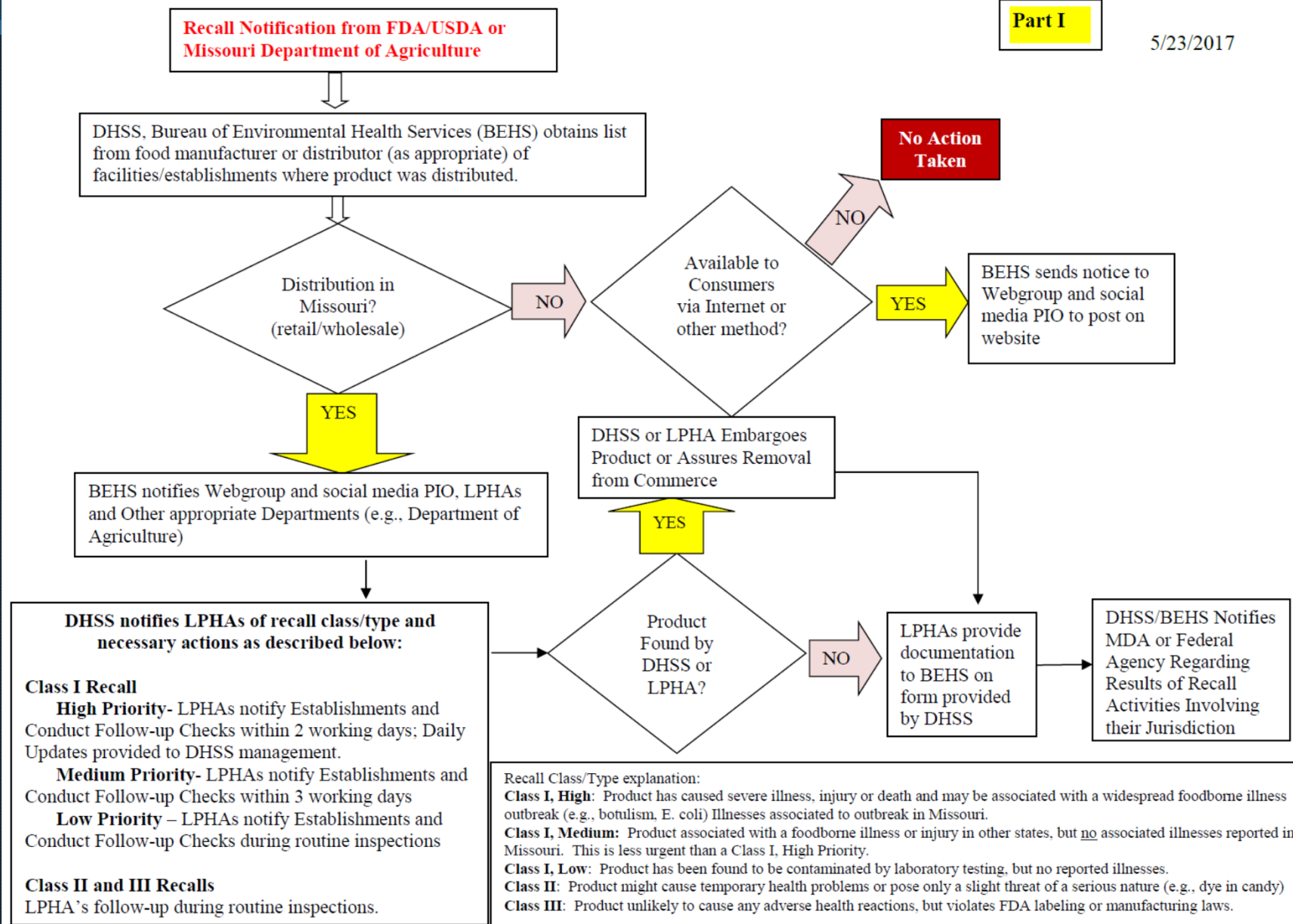
Missouri Rapid Response Team

Foodborne Illness Investigations
and Recalls

Environmental Health Operational Guidelines

2015-2018

This manual is designed to aid Local Public Health Agencies in the routine decision making process associated with various environmental health programs within the Bureau of Environmental Health Services.



****Note:** Every recall is situational and subject to adjustments. In general, DHSS staff provides recall coordination and technical advice for LPHAs during all recall responses; DHSS staff assists with field recall response for widespread or large recalls; DHSS staff ensures communication and collaboration with federal and sister agency partners.



Missouri Department of Health and Senior Services Recall Alert

To: Local Public Health Agencies
From: Nancy Beyer, Quality Assurance and Recall Coordinator
Date: Current Date

CLASS: **Class I High Priority**
Class I Medium Priority
Class I Low Priority
Class II
Class III

This announcement is distributed to Environmental staff and LPHA Administrators.

- Please notify the affected facilities in your jurisdiction
- Conduct follow-up checks **within two working days**
within three working days
during next routine inspection
- Distribution information

Necessary Information:

- Web Link – Insert web link
See the original announcement for examples of labels

Insert announcement text

Additional Information:

- Forms: <http://dhssnet/appsforms/pdf/recallfollowupreportform.pdf> or
<http://dhssnet/appsforms/pdf/recallfollowupsummaryreportform.pdf>
- Recall Procedures – Environmental Health Operational Guidelines:
<http://health.mo.gov/atoz/ehog/pdf/ehogmanual.pdf> Section 2.8

If you have any questions regarding this listserve, please contact Nancy Beyer at Nancy.Beyer@health.mo.gov or call 573-751-6095 Bureau of Environmental Health Services

CONFIDENTIALITY STATEMENT

This email is from the Missouri Department of Health and Senior Services. It contains commercially confidential or privileged information such as distribution information that is protected from disclosure by law. Unauthorized disclosure, review, copying, distribution, or use of this message or its contents by anyone other than the intended recipient is prohibited.



RECALL FOLLOW-UP REPORT FORM

MISSOURI DEPARTMENT OF HEALTH AND SENIOR SERVICES
BUREAU OF ENVIRONMENTAL HEALTH SERVICES

[Print Report](#)[Reset Form](#)

Date: _____

County: _____

1. RECALL INFORMATION

RECALLING COMPANY NAME/ADDRESS: _____

PRODUCT BEING RECALLED: _____

PRODUCT DESCRIPTION: (Recall code #, Plant Number, etc.) _____

2. ESTABLISHMENT INFORMATION

ESTABLISHMENT NAME: _____ PHONE #: _____
ADDRESS: _____ CITY: _____
ESTABLISHMENT TYPE:
☐ RESTAURANT ☐ CONVENIENCE STORE ☐ SCHOOL ☐ GROCERY STORE ☐ SALVAGE STORE ☐ INSTITUTION
☐ MANUFACTURER ☐ DISTRIBUTOR ☐ OTHER: _____

3. TYPE OF RECALL FOLLOW-UP CHECK. NAME & TITLE OF PERSON CONTACTED

☐ SITE VISIT TO FACILITY ☐ TELEPHONE CALL TO FACILITY ☐ OTHER: _____
NAME OF PERSON CONTACTED: _____ TITLE: _____

4. PRODUCT STATUS

- A. DOES THE ESTABLISHMENT CARRY THE RECALLED PRODUCT? ☐ YES* ☐ NO (if NO skip to #6)
*YES: ESTIMATED QUANTITY OF RECALLED PRODUCT ON HAND AT TIME OF NOTIFICATION: _____
- B. DID THE ESTABLISHMENT RECEIVE NOTIFICATION OF THE RECALL FROM ANOTHER SOURCE (RECALLING FIRM, DISTRIBUTOR, ETC.)? ☐ YES* ☐ NO *YES: Recall Notification Source: _____
- C. DID THE ESTABLISHMENT FOLLOW THE RECALL INSTRUCTIONS?
☐ YES ☐ NO* (Explain): _____
- D. IS THERE CURRENTLY ANY RECALLED PRODUCT FOR SALE OR USE? ☐ YES* ☐ NO
*NOTE: If the recalled product is still on the shelf for sale to the customer and the establishment does not take immediate corrective action to remove it from sale, the product must be immediately embargoed and placed in a secured location at the facility.
- E. WHAT IS THE CURRENT STATUS OF THE RECALLED PRODUCT?
☐ NONE ON HAND ☐ RETURNED TO RECALLING FIRM ☐ RECALLED PRODUCT DESTROYED
☐ PRODUCT BEING HELD FOR RETURN & STORED IN A SECURED LOCATION AND LABELED IN A MANNER TO PREVENT IT FROM BEING RETURNED TO THE SALES FLOOR ☐ OTHER: _____
- F. IS AN EMBARGO IN PLACE AT THIS TIME? ☐ YES* ☐ NO *Attach Embargo Paperwork with this Report.

5. INJURIES/COMPLAINTS

IS THE ESTABLISHMENT AWARE OF ANY INJURIES, ILLNESSES, OR COMPLAINTS ASSOCIATED WITH THE RECALLED PRODUCT? ☐ INJURY ☐ ILLNESS ☐ COMPLAINT ☐ NONE

6. REMARKS/COMMENTS (INCLUDE ACTION TAKEN IF PRODUCT WAS STILL AVAILABLE FOR SALE OR USE) Attach additional pages/documents as needed.

FAX form to 573-526-7377

NAME / TITLE / EPHS NUMBER

AGENCY NAME

TELEPHONE NUMBER



RECALL FOLLOW-UP SUMMARY REPORT FORM
MISSOURI DEPARTMENT OF HEALTH AND SENIOR SERVICES
BUREAU OF ENVIRONMENTAL HEALTH SERVICES

Page ____ of ____

RECALLING COMPANY:					LPHA:				
					DATE:				
PRODUCT BEING RECALLED:					CIRCLE CLASS AND TYPE RECALL CLASS: TYPE: I II III High Medium Low				
CONTACT DATE	ESTABLISHMENT NAME/CITY	CONTACT TYPE: Visit(V) Phone (P) Fax (F) Email (E)	RECALLED PRODUCT HANDLED Y/N	PRODUCT AVAILABLE FOR SALE OR USE Y/N	NONE ON HAND	DESTROYED	HELD FOR RETURN	EMBARGO IN PLACE Y/N	COMMENTS:
NAME OF PERSON SUBMITTING FORM:								FAX TO (573)526-7377	
FOR QUESTIONS CONTACT: NANCY BEYER AT (573)751-6095 or nancy.beyer@health.mo.gov									

Monthly Activity Report

Month/ Year	Total Recalls Reviewed	Total - Class I Reviewed	Total - Class I High Priority	Total - Class I Medium Priority	Total - Class I Low Priority	Total - Class II Reviewed	Total - Class III Reviewed	Food	Pharmaceuticals	Total with product distributed in MO	Immediate Effectiveness Checks Requested- Medium & High	Product Recalled requiring immediate effectiveness check	Possible MO Illnesses Related to Recalls
17-Jan	41	30	0	0	30	9	2	36	5	<u>9</u>	0		0
17-Feb	47	37	0	0	37	10	0	40	7	<u>12</u>	0		0
17-Mar	56	40	0	5	35	15	1	52	4	<u>10</u>	2	SoyNut Butter	1
17-Apr	46	38	0	0	38	8	0	40	6	<u>8</u>	0		0
17-May	62	45	0	2	43	16	1	51	11	<u>16</u>	0		0
17-Jun	70	64	0	0	64	6	0	57	13	<u>16</u>	0		0
17-Jul	29	23	0	1	22	6	0	24	5	<u>11</u>	1	Papaya	1
17-Aug	47	40	0	0	40	7	0	34	13	<u>6</u>	0		0
17-Sep	27	23	0	0	23	3	1	21	6	<u>1</u>	0		0
17-Oct	65	60	0	1	59	5	0	63	2	<u>8</u>	0		0
17-Nov	38	29	0	2	27	9	0	33	5	<u>9</u>	0		0
17-Dec	29	28	1	0	27	1	0	26	3	<u>3</u>	1	Candy	0
Total 2017	557	457	1	11	445	95	5	477	80	109	4		2

Recall Class/Type explanation:

Class I, High: Product has caused severe illness, injury or death and may be associated with a widespread foodborne illness outbreak (e.g., botulism, E. coli) Illnesses associated to outbreak in Missouri.

Class I, Medium: Product associated with a foodborne illness or injury in other states, but no associated illnesses reported in Missouri. This is less urgent than a Class I, High Priority.

Class I, Low: Product has been found to be contaminated by laboratory testing, but no reported illnesses.

Class II: Product might cause temporary health problems or pose only a slight threat of a serious nature (e.g., dye in candy)

Class III: Product unlikely to cause any adverse health reactions, but violates FDA labeling or manufacturing laws.

DHSS notifies LPHAs of recall class/type and recommended actions as described below:

Class I Recall

High Priority- LPHAs notify Establishments and Conduct Follow-up Checks within 2 working days. Updates provided to DHSS management.

Medium Priority- LPHAs notify Establishments and Conduct Follow-up Checks within 3 working days

Low Priority – LPHAs notify Establishments and Conduct Follow-up Checks during routine inspections

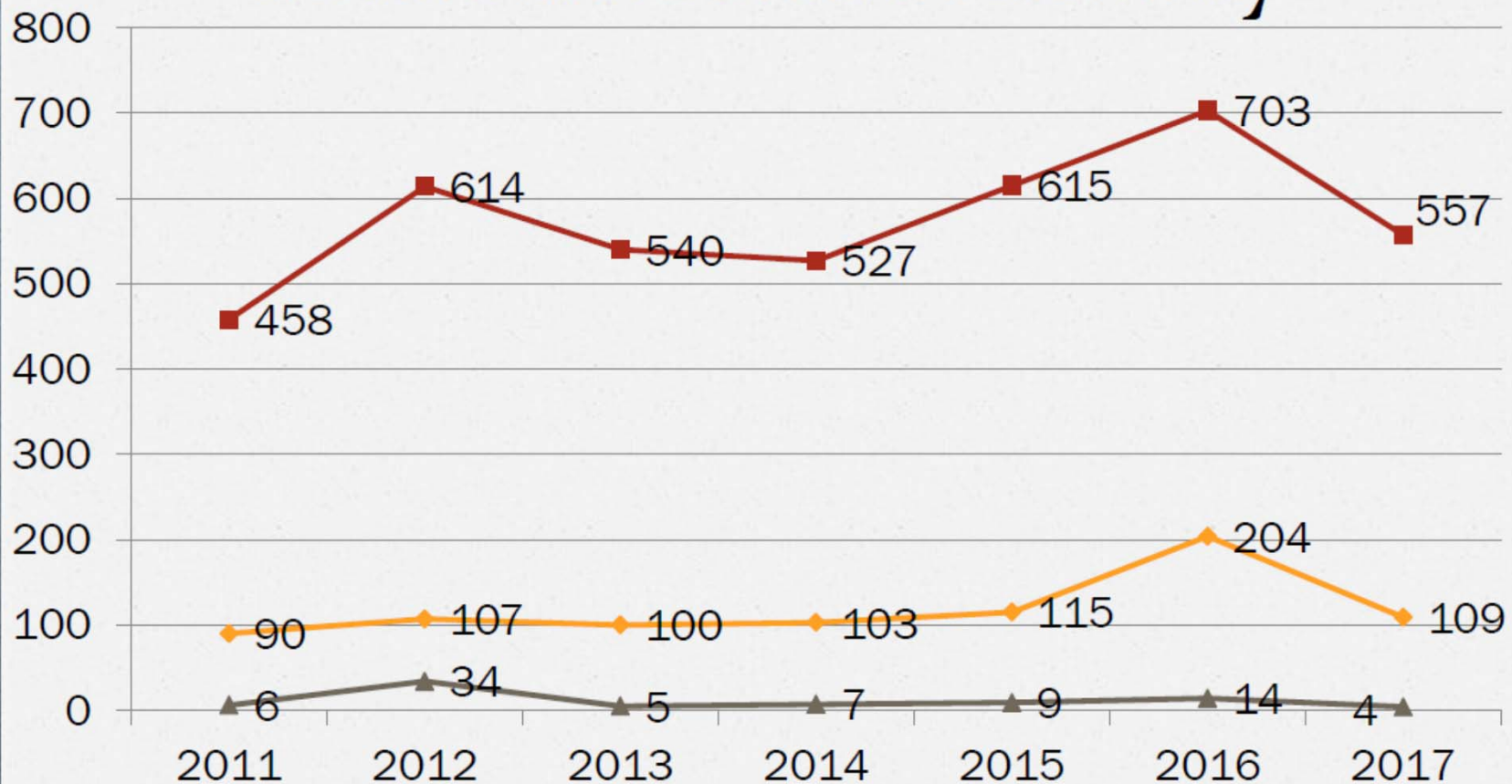
Class II and III Recalls

LPHA's follow-up during routine inspections.

Recalled Products linked to Missouri

Date	Record Number	Firm Name	Product Name	Class	Priority	Announcement Hyperlink	Note
1/6/2017	3838	4G Meat Processing	Italian Sausage	II		https://www.fsis.usda.gov/wps/portal/fsis/topics/recalls-and-public-health-alerts/recall-case-archive/archive/2017/rnr-001-2017	Sent to web page, Chariton and Randolph Counties
1/10/2017	3840	Hostess Brands, LLC	Twinkies	I	Low	http://www.fda.gov/Safety/Recalls/ucm536055.htm	
1/10/2017	3841	Palmer Candy	Various Candies	I	Low	http://www.fda.gov/Safety/Recalls/ucm536052.htm	
1/11/2017	3845	Perfect Fit Meals	Chicken Breast Product	I	Low	https://www.fsis.usda.gov/wps/portal/fsis/topics/recalls-and-public-health-alerts/recall-case-archive/archive/2017/recall-003-2017-release	
1/17/2017	3847	Hy-Vee	Various Palmer Candies	I	Low	http://www.fda.gov/Safety/Recalls/ucm536978.htm	
1/17/2017	3849	Dutch Valley Foods	Cappuccino Snack Mix	I	Low	http://www.fda.gov/Safety/Recalls/ucm536706.htm	Sent to web, Taney, Saline and Johnson Counties
1/17/2017	3851	The Pictsweet Company	Breaded Okra	II		http://www.fda.gov/Safety/Recalls/ucm537117.htm	
1/17/2017	3853	Golden Flake Snack Foods	Potato Chips	I	Low	http://www.fda.gov/Safety/Recalls/ucm537051.htm	Sent to web, Dunklin and Scott Counties
1/18/2017	3858	Burger's Ozark Country Cured	Turkey	III		https://www.fsis.usda.gov/wps/portal/fsis/topics/recalls-and-public-health-alerts/recall-case-archive/archive/2017/rnr-006-2017	Sent to web only
2/1/2017	3876	U.S. Smokeless Tobacco Company	Smokeless Tobacco	II		http://www.fda.gov/Safety/Recalls/ucm539395.htm?source=govdelivery&utm_medium=email&utm_source=govdelivery	Posted to web only
2/9/2017	3884	Kingsway Trading, Inc.	Dietary Supplement	I	Low	http://www.fda.gov/Safety/Recalls/ucm540540.htm	Posted to web and sent to StL City and County
2/14/2017	3891	Sargento Foods, Inc.	Cheese	I	Low	http://www.fda.gov/Safety/Recalls/ucm541527.htm	
2/14/2017	3892	MDS Foods, Inc.	Cheese	I	Low	http://www.fda.gov/Safety/Recalls/ucm541377.htm	

Missouri Recall Activity



—◆— Product in MO

—■— Total Reviewed

—▲— Recommended Immediate Follow-up

- Obtaining distribution information
- Information sharing
- Email encryption systems
- Keeping contact information up to date

Challenges

Missouri Department of Health and Senior Services

Division of Community and Public Health

Bureau of Environmental Health Services

- Nancy Beyer
Recall Coordinator
P. O. Box 570 / 930 Wildwood Drive
Jefferson City, Missouri 65102
(573)751-6095
nancy.beyer@health.mo.gov